



Patentamientos por Marcas - Mercado Total

	sep/13(a)	ago/13(b)	sep/12(c)	sep/11(d)	Var a-b	Var a-c	Var a-d	Ac. 13	Ac. 12	Var 13-12
Automovil	62.474	62.987	48.449	65.703	-0,81%	28,95%	-4,91%	571.341	523.959	9,04%
Comercial Liviano	16.516	15.863	13.468	14.864	4,12%	22,63%	11,11%	151.491	125.437	20,77%
Comercial Pesado	2.290	2.362	1.673	2.550	-3,05%	36,88%	-10,20%	20.372	17.013	19,74%
Otros Pesados	1.059	1.090	919	1.192	-2,84%	15,23%	-11,16%	9.520	8.924	6,68%
Total	82.339	82.302	64.509	84.309	0,04%	27,64%	-2,34%	752.724	675.333	11,46%
Prom. diario	3.921	3.919	3.395	3.832				4.159	3.731	
Dias habiles	21	21	19	22				181	181	

Patentamientos por origen		
	13-Sep	Ac. 13
Importados	52.514	450.700
Nacionales	29.825	302.027



■ Importados ■ Nacionales

Patentamientos Mensuales

	ene	feb	mar	abr	may	jun	jul	ago	sep	oct	nov	dic
2013	110.051	63.316	77.646	82.039	92.386	74.734	87.914	82.302	82.339			
2012	112.798	58.183	82.263	60.834	76.389	69.716	74.161	76.480	64.509	70.194	58.096	37.551
Var% 13-12	-2,44%	8,82%	-5,61%	34,86%	20,94%	7,20%	18,54%	7,61%	27,64%	-100,00%	-100,00%	-100,00%
2011	104.105	60.178	67.604	65.373	67.985	78.517	73.035	79.967	84.309	72.405	65.756	38.788
2010	78.465	44.759	57.287	50.946	50.819	54.810	57.571	57.401	64.049	53.827	54.042	38.762

Patentamientos por Marcas - Totales

Marca	2013		2012		2011		2010		2013	2013	2012	2012	2013-2012
	sep/13(a)	Part %	sep/12(c)	Part %	ago/13(e)	Part %	Var a-c	Var a-e					
Volkswagen	13.497	16,61%	11.888	18,70%	13.810	17,01%	13,53%	-2,27%	127.307	17,13%	132.576	19,90%	-3,97%
Chevrolet	13.062	16,07%	9.758	15,35%	12.073	14,87%	33,86%	8,19%	108.466	14,59%	107.761	16,17%	0,65%
Renault	13.134	16,16%	10.123	15,92%	11.623	14,31%	29,74%	13,00%	107.278	14,43%	97.594	14,65%	9,92%
Ford	8.330	10,25%	7.703	12,11%	8.847	10,89%	8,14%	-5,84%	94.437	12,71%	80.786	12,12%	16,90%
Fiat	9.182	11,30%	5.061	7,96%	9.747	12,00%	81,43%	-5,80%	85.042	11,44%	66.627	10,00%	27,64%
Peugeot	8.958	11,02%	6.875	10,81%	9.701	11,95%	30,30%	-7,66%	78.884	10,61%	64.295	9,65%	22,69%
Toyota	4.134	5,09%	3.404	5,35%	3.846	4,74%	21,45%	7,49%	40.977	5,51%	35.729	5,36%	14,69%
Citroen	3.375	4,15%	2.589	4,07%	3.525	4,34%	30,36%	-4,26%	32.982	4,44%	23.404	3,51%	40,92%
Mercedes Benz	1.637	2,01%	1.217	1,91%	1.785	2,20%	34,51%	-8,29%	15.023	2,02%	11.277	1,69%	33,22%
Honda	1.204	1,48%	1.631	2,56%	1.308	1,61%	-26,18%	-7,95%	9.800	1,32%	12.864	1,93%	-23,82%
Chery	726	0,89%	501	0,79%	748	0,92%	44,91%	-2,94%	6.212	0,84%	4.759	0,71%	30,53%
Audi	564	0,69%	465	0,73%	558	0,69%	21,29%	1,08%	6.046	0,81%	5.213	0,78%	15,98%
Iveco	751	0,92%	538	0,85%	703	0,87%	39,59%	6,83%	5.883	0,79%	4.425	0,66%	32,95%
Nissan	503	0,62%	281	0,44%	567	0,70%	79,00%	-11,29%	4.366	0,59%	3.570	0,54%	22,30%
Hyundai	511	0,63%	381	0,60%	586	0,72%	34,12%	-12,80%	4.124	0,55%	3.273	0,49%	26,00%
BMW	293	0,36%	164	0,26%	328	0,40%	78,66%	-10,67%	3.305	0,44%	1.623	0,24%	103,64%
Jeep	229	0,28%	215	0,34%	186	0,23%	6,51%	23,12%	2.334	0,31%	1.413	0,21%	65,18%
Scania	196	0,24%	144	0,23%	229	0,28%	36,11%	-14,41%	2.058	0,28%	1.631	0,24%	26,18%
Kia	273	0,34%	104	0,16%	249	0,31%	162,50%	9,64%	1.732	0,23%	1.304	0,20%	32,82%
Dodge	148	0,18%	200	0,31%	206	0,25%	-26,00%	-28,16%	1.705	0,23%	2.237	0,34%	-23,78%
Volvo	146	0,18%	92	0,14%	131	0,16%	58,70%	11,45%	1.184	0,16%	1.013	0,15%	16,88%
Agrale	90	0,11%	70	0,11%	117	0,14%	28,57%	-23,08%	847	0,11%	786	0,12%	7,76%
Mini	49	0,06%	37	0,06%	51	0,06%	32,43%	-3,92%	590	0,08%	428	0,06%	37,85%
Alfa Romeo	63	0,08%	21	0,03%	83	0,10%	200,00%	-24,10%	551	0,07%	234	0,04%	135,47%
Mitsubishi	55	0,07%	32	0,05%	65	0,08%	71,88%	-15,38%	531	0,07%	480	0,07%	10,63%
Land Rover	61	0,08%	17	0,03%	26	0,03%	258,82%	134,62%	324	0,04%	115	0,02%	181,74%
Subaru	40	0,05%	5	0,01%	28	0,03%	700,00%	42,86%	321	0,04%	194	0,03%	65,46%
Smart	25	0,03%	24	0,04%	25	0,03%	4,17%	0,00%	306	0,04%	218	0,03%	40,37%
Porsche	19	0,02%	21	0,03%	20	0,02%	-9,52%	-5,00%	193	0,03%	109	0,02%	77,06%
DFM	7	0,01%	9	0,01%	25	0,03%	-22,22%	-72,00%	138	0,02%	110	0,02%	25,45%
Puma de Tat	1	0,00%	9	0,01%	2	0,00%	-88,89%	-50,00%	74	0,01%	145	0,02%	-48,97%
Chrysler	4	0,00%	6	0,01%	8	0,01%	-33,33%	-50,00%	72	0,01%	51	0,01%	41,18%
Ssangyong	11	0,01%	4	0,01%	3	0,00%	175,00%	266,67%	56	0,01%	65	0,01%	-13,85%
Lexus		0,00%		0,00%		0,00%	N/D	N/D	18	0,00%		0,00%	N/D
Jaguar		0,00%		0,00%		0,00%	N/D	N/D	7	0,00%	4	0,00%	75,00%
Materfer		0,00%		0,00%		0,00%	N/D	N/D	5	0,00%	18	0,00%	-72,22%
Mack		0,00%		0,00%	1	0,00%	N/D	-100,00%	4	0,00%	11	0,00%	-63,64%
Ferrari	1	0,00%		0,00%		0,00%	N/D	N/D	3	0,00%	2	0,00%	50,00%
Suzuki		0,00%		0,00%		0,00%	N/D	N/D	1	0,00%	20	0,00%	-95,00%
Total	81.279		63.589		81.210				743.186		666.364		

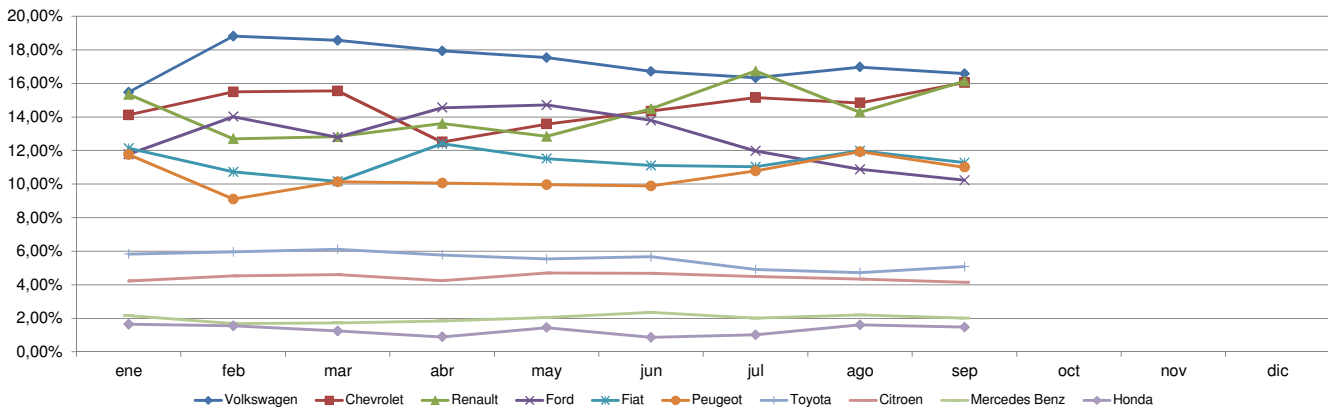


Patentamientos por Marcas - Mercado Total

Patentamientos por Marcas - Autos + Livianos									2013	2013	2012	2012	Var
Marca	sep/13(a)	Part %	sep/12(c)	Part %	ago/13(e)	Part %	Var a-c	Var a-e	ene - sep	Part %	ene - sep	Part %	2013-2012
Volkswagen	13.315	16,86%	11.748	18,97%	13.611	17,26%	13,34%	-2,17%	125.565	17,37%	131.153	20,20%	-4,26%
Chevrolet	13.062	16,54%	9.758	15,76%	12.073	15,31%	33,86%	8,19%	108.466	15,01%	107.761	16,60%	0,65%
Renault	13.032	16,50%	10.065	16,26%	11.532	14,63%	29,48%	13,01%	106.705	14,76%	97.174	14,96%	9,81%
Ford	8.026	10,16%	7.533	12,17%	8.633	10,95%	6,54%	-7,03%	91.820	12,70%	78.290	12,06%	17,28%
Fiat	9.182	11,62%	5.061	8,17%	9.747	12,36%	81,43%	-5,80%	85.042	11,77%	66.627	10,26%	27,64%
Peugeot	8.958	11,34%	6.875	11,10%	9.701	12,30%	30,30%	-7,66%	78.884	10,91%	64.295	9,90%	22,69%
Toyota	4.134	5,23%	3.404	5,50%	3.846	4,88%	21,45%	7,49%	40.977	5,67%	35.729	5,50%	14,69%
Citroen	3.375	4,27%	2.589	4,18%	3.525	4,47%	30,36%	-4,26%	32.982	4,56%	23.404	3,60%	40,92%
Honda	1.204	1,52%	1.631	2,63%	1.308	1,66%	-26,18%	-7,95%	9.800	1,36%	12.864	1,98%	-23,82%
Mercedes Benz	890	1,13%	615	0,99%	930	1,18%	44,72%	-4,30%	7.989	1,11%	5.285	0,81%	51,16%
Chery	726	0,92%	501	0,81%	748	0,95%	44,91%	-2,94%	6.212	0,86%	4.759	0,73%	30,53%
Audi	564	0,71%	465	0,75%	558	0,71%	21,29%	1,08%	6.046	0,84%	5.213	0,80%	15,98%
Nissan	503	0,64%	281	0,45%	567	0,72%	79,00%	-11,29%	4.366	0,60%	3.570	0,55%	22,30%
Hyundai	475	0,60%	352	0,57%	565	0,72%	34,94%	-15,93%	3.908	0,54%	3.124	0,48%	25,10%
BMW	293	0,37%	164	0,26%	328	0,42%	78,66%	-10,67%	3.305	0,46%	1.623	0,25%	103,64%
Jeep	229	0,29%	215	0,35%	186	0,24%	6,51%	23,12%	2.334	0,32%	1.413	0,22%	65,18%
Kia	273	0,35%	104	0,17%	249	0,32%	162,50%	9,64%	1.732	0,24%	1.304	0,20%	32,82%
Dodge	148	0,19%	200	0,32%	206	0,26%	-26,00%	-28,16%	1.705	0,24%	2.237	0,34%	-23,78%
Iveco	213	0,27%	146	0,24%	178	0,23%	45,89%	19,66%	1.514	0,21%	1.269	0,20%	19,31%
Mini	49	0,06%	37	0,06%	51	0,06%	32,43%	-3,92%	590	0,08%	428	0,07%	37,85%
Alfa Romeo	63	0,08%	21	0,03%	83	0,11%	200,00%	-24,10%	551	0,08%	234	0,04%	135,47%
Mitsubishi	55	0,07%	32	0,05%	65	0,08%	71,88%	-15,38%	531	0,07%	480	0,07%	10,63%
Volvo	59	0,07%	42	0,07%	48	0,06%	40,48%	22,92%	482	0,07%	333	0,05%	44,74%
Land Rover	61	0,08%	17	0,03%	26	0,03%	258,82%	134,62%	324	0,04%	115	0,02%	181,74%
Subaru	40	0,05%	5	0,01%	28	0,04%	700,00%	42,86%	321	0,04%	194	0,03%	65,46%
Smart	25	0,03%	24	0,04%	25	0,03%	4,17%	0,00%	306	0,04%	218	0,03%	40,37%
Porsche	19	0,02%	21	0,03%	20	0,03%	-9,52%	-5,00%	193	0,03%	109	0,02%	77,06%
Chrysler	4	0,01%	6	0,01%	8	0,01%	-33,33%	-50,00%	72	0,01%	51	0,01%	41,18%
Ssangyong	11	0,01%	4	0,01%	3	0,00%	175,00%	266,67%	56	0,01%	65	0,01%	-13,85%
Lexus		0,00%		0,00%		0,00%	N/D	N/D	18	0,00%		0,00%	N/D
Jaguar		0,00%		0,00%		0,00%	N/D	N/D	7	0,00%	4	0,00%	75,00%
Ferrari	1	0,00%		0,00%		0,00%	N/D	N/D	3	0,00%	2	0,00%	50,00%
Seat	1	0,00%		0,00%		0,00%	N/D	N/D	2	0,00%	1	0,00%	100,00%
Suzuki		0,00%		0,00%		0,00%	N/D	N/D	1	0,00%	20	0,00%	-95,00%
Total	78.990		61.916		78.848				722.809		649.348		

Patentamientos por Marcas - Camiones + Buses									2013	2013	2012	2012	Var
Marca	sep/13(a)	Part %	sep/12(c)	Part %	ago/13(e)	Part %	Var a-c	Var a-e	ene - sep	Part %	ene - sep	Part %	2013-2012
Mercedes Benz	747	32,62%	602	35,98%	855	36,20%	24,09%	-12,63%	7.034	34,52%	5.992	35,21%	17,39%
Iveco	538	23,49%	392	23,43%	525	22,23%	37,24%	2,48%	4.369	21,44%	3.156	18,55%	38,43%
Ford	304	13,28%	170	10,16%	214	9,06%	78,82%	42,06%	2.617	12,84%	2.496	14,67%	4,85%
Scania	196	8,56%	144	8,61%	229	9,70%	36,11%	-14,41%	2.058	10,10%	1.631	9,58%	26,18%
Volkswagen	182	7,95%	140	8,37%	199	8,43%	30,00%	-8,54%	1.742	8,55%	1.423	8,36%	22,42%
Agrale	90	3,93%	70	4,18%	117	4,95%	28,57%	-23,08%	847	4,16%	786	4,62%	7,76%
Volvo	87	3,80%	50	2,99%	83	3,51%	74,00%	4,82%	702	3,44%	680	4,00%	3,24%
Renault	102	4,45%	58	3,47%	91	3,85%	75,86%	12,09%	573	2,81%	420	2,47%	36,43%
Hyundai	36	1,57%	29	1,73%	21	0,89%	24,14%	71,43%	216	1,06%	149	0,88%	44,97%
DFM	7	0,31%	9	0,54%	25	1,06%	-22,22%	-72,00%	138	0,68%	110	0,65%	25,45%
Puma de Tat	1	0,04%	9	0,54%	2	0,08%	-88,89%	-50,00%	74	0,36%	145	0,85%	-48,97%
Materfer		0,00%		0,00%		0,00%	N/D	N/D	5	0,02%	18	0,11%	-72,22%
Mack		0,00%		0,00%	1	0,04%	N/D	-100,00%	4	0,02%	11	0,06%	-63,64%
Total	2.290		1.673		2.362				20.379		17.017		

Participacion por Marcas - Evolucion Mensual

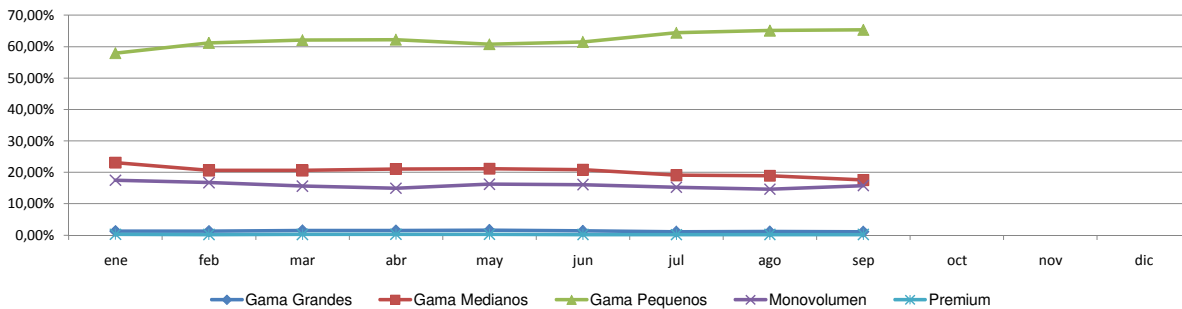




Patentamientos por Ranking de Automoviles - Mercado Total

Rank.	Modelo	Ranking Por Modelos - Automoviles									
		sep/13 (a)	sep/12 (b)	ago/13 (c)	Var a-b	Var a-c	Ac. 13	Part %	Ac. 12	Part %	Var 13-12
1	Volkswagen GOL	5.379	5.143	5.551	4,59%	-3,10%	46.486	8,14%	51.904	9,91%	-10,44%
2	Chevrolet CLASSIC	3.307	2.877	3.316	14,95%	-0,27%	30.888	5,41%	35.041	6,69%	-11,85%
3	Peugeot 207	1.719	2.438	1.729	-29,49%	-0,58%	26.241	4,59%	25.056	4,78%	4,73%
4	Ford ECOSPORT	2.587	551	2.882	369,51%	-10,24%	26.133	4,57%	19.201	3,66%	36,10%
5	Renault CLIO MIO	2.600		2.613	N/D	-0,50%	25.864	4,53%	1	0,00%	2586300,00%
6	Renault DUSTER	2.244	1.448	1.583	54,97%	41,76%	19.138	3,35%	14.457	2,76%	32,38%
7	Volkswagen SURAN	1.920	1.767	1.613	8,66%	19,03%	18.104	3,17%	20.126	3,84%	-10,05%
8	Fiat PALIO	1.817	1.299	1.816	39,88%	0,06%	17.938	3,14%	11.266	2,15%	59,22%
9	Peugeot 308	1.518	1.253	1.550	21,15%	-2,06%	16.249	2,84%	10.501	2,00%	54,74%
10	Renault SANDERO	2.794	1.543	2.258	81,08%	23,74%	16.166	2,83%	19.139	3,65%	-15,53%
11	Ford FIESTA KINETIC	851	424	421	100,71%	102,14%	15.035	2,63%	8.852	1,69%	69,85%
12	Ford KA	1.656	2.476	1.654	-33,12%	0,12%	14.924	2,61%	16.149	3,08%	-7,59%
13	Chevrolet CELTA	1.270	1.488	1.283	-14,65%	-1,01%	14.038	2,46%	15.079	2,88%	-6,90%
14	Chevrolet AGILE	1.012	1.395	1.353	-27,46%	-25,20%	13.777	2,41%	14.875	2,84%	-7,38%
15	Ford FOCUS II	589	1.519	1.189	-61,22%	-50,46%	13.572	2,38%	14.682	2,80%	-7,56%
16	Toyota COROLLA	1.240	1.049	1.162	18,21%	6,71%	12.886	2,26%	12.566	2,40%	2,55%
17	Volkswagen FOX	1.241	954	1.445	30,08%	-14,12%	12.219	2,14%	16.892	3,22%	-27,66%
18	Fiat SIENA	1.548	719	1.394	115,30%	11,05%	11.969	2,09%	11.534	2,20%	3,77%
19	Volkswagen VOYAGE	1.091	986	1.259	10,65%	-13,34%	11.043	1,93%	12.825	2,45%	-13,89%
20	Peugeot 408	758	943	867	-19,62%	-12,57%	8.952	1,57%	9.423	1,80%	-5,00%
21	Citroen NUEVO C3	1.014		1.101	N/D	-7,90%	8.807	1,54%		0,00%	N/D
22	Volkswagen VENTO	845	596	927	41,78%	-8,85%	8.741	1,53%	6.817	1,30%	28,22%
23	Peugeot 208	2.806		3.212	N/D	-12,64%	8.601	1,51%		0,00%	N/D
24	Fiat UNO 2010	887	626	898	41,69%	-1,22%	8.520	1,49%	9.492	1,81%	-10,24%
25	Volkswagen BORA	653	420	679	55,48%	-3,83%	7.731	1,35%	4.060	0,77%	90,42%
26	Renault LOGAN	1.618	828	1.501	95,41%	7,79%	7.679	1,34%	7.791	1,49%	-1,44%
27	Fiat PUNTO	801	166	1.251	382,53%	-35,97%	6.972	1,22%	5.097	0,97%	36,79%
28	Renault FLUENCE	765	704	658	8,66%	16,26%	6.885	1,21%	7.795	1,49%	-11,67%
29	Chevrolet SPIN	1.042		790	N/D	31,90%	6.834	1,20%		0,00%	N/D
30	Chevrolet AVEO	776	930	198	-16,56%	291,92%	5.973	1,05%	13.974	2,67%	-57,26%
31	Peugeot PARTNER	656	578	670	13,49%	-2,09%	5.869	1,03%	4.200	0,80%	39,74%
32	Fiat GRAND SIENA	629		703	N/D	-10,53%	5.571	0,98%		0,00%	N/D
33	Chevrolet ONIX	1.380		1.036	N/D	33,20%	5.386	0,94%		0,00%	N/D
34	Citroen C4	564	606	495	-6,93%	13,94%	5.189	0,91%	6.442	1,23%	-19,45%
35	Citroen C3	404	683	448	-40,85%	-9,82%	5.174	0,91%	5.902	1,13%	-12,33%
36	Chevrolet PRISMA	1.002	149	1.080	572,48%	-7,22%	5.166	0,90%	2.847	0,54%	81,45%
37	Chevrolet SONIC	307	453	393	-32,23%	-21,88%	5.016	0,88%	2.371	0,45%	111,56%
38	Fiat UNO	552	460	717	20,00%	-23,01%	4.955	0,87%	5.256	1,00%	-5,73%
39	Renault KANGOO	414	577	512	-28,25%	-19,14%	4.827	0,84%	5.214	1,00%	-7,42%
40	Chevrolet COBALT	801		914	N/D	-12,36%	4.816	0,84%		0,00%	N/D
41	Citroen C3 PICASSO	433	331	512	30,82%	-15,43%	4.532	0,79%	1.958	0,37%	131,46%
42	Chevrolet CRUZE	435	685	540	-36,50%	-19,44%	4.453	0,78%	6.683	1,28%	-33,37%
43	Ford FIESTA	453	247	420	83,40%	7,86%	3.929	0,69%	4.275	0,82%	-8,09%
44	Fiat QUBO	312	312	384	0,00%	-18,75%	3.378	0,59%	1.871	0,36%	80,55%
45	Renault SYMBOL	216	378	275	-42,86%	-21,45%	3.155	0,55%	3.307	0,63%	-4,60%
46	Honda CIVIC	435	236	413	84,32%	5,33%	2.951	0,52%	2.133	0,41%	38,35%
47	Chery QQ	281	186	286	51,08%	-1,75%	2.826	0,49%	2.059	0,39%	37,25%
48	Honda FIT	363	747	407	-51,41%	-10,81%	2.654	0,46%	5.193	0,99%	-48,89%
49	Citroen BERLINGO	268	260	259	3,08%	3,47%	2.238	0,39%	1.943	0,37%	15,18%
50	Fiat 500	201	375	177	-46,40%	13,56%	2.127	0,37%	3.790	0,72%	-43,88%
51	Otros	4.020	6.643	4.191	-39,49%	-4,08%	38.741	6,78%	63.872	12,19%	-39,35%
Total		62.474	48.448	62.985			571.318	1	523.911		

Autos - Participacion por Segmento





Patentamientos por Ranking de Livianos y Pesados - Mercado Total

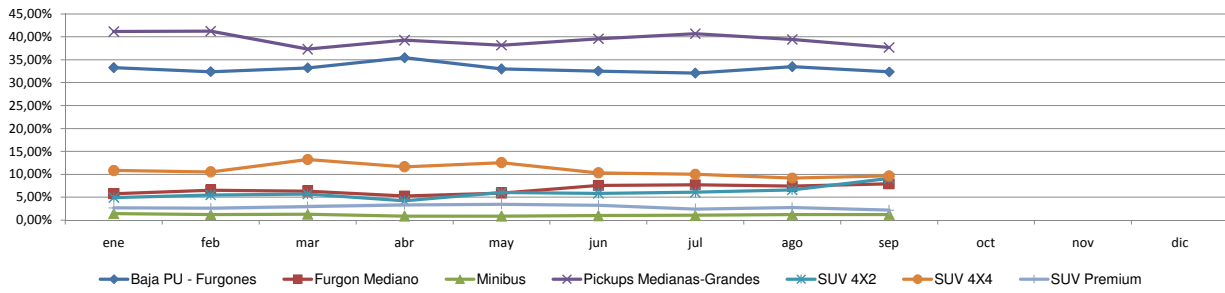
Comercial Liviano												
Rank.	Modelo	sep/13 (a)	sep/12 (b)	ago/13 (c)	Var a-b	Var a-c	Ac. 13	Part %	Ac. 12	Part %	Var 13-12	
1	Toyota HILUX	2.125	1.875	2.075	13,33%	2,41%	22.211	14,66%	17.805	14,19%	24,75%	
2	Ford RANGER	1.678	1.987	1.924	-15,55%	-12,79%	16.153	10,66%	11.537	9,20%	40,01%	
3	Renault KANGOO FURGON	1.390	1.328	1.279	4,67%	8,68%	11.976	7,91%	10.400	8,29%	15,15%	
4	Volkswagen AMAROK	1.342	1.001	1.236	34,07%	8,58%	11.852	7,82%	11.741	9,36%	0,95%	
5	Peugeot PARTNER FURGON	1.024	1.088	1.074	-5,88%	-4,66%	8.371	5,53%	7.484	5,97%	11,85%	
6	Chevrolet S-10	933	502	856	85,86%	9,00%	8.070	5,33%	5.907	4,71%	36,62%	
7	Fiat STRADA	804	384	693	109,38%	16,02%	7.787	5,14%	6.446	5,14%	20,80%	
8	Volkswagen SAVEIRO	537	498	575	7,83%	-6,61%	5.719	3,78%	3.741	2,98%	52,87%	
9	Fiat FIORINO	459	175	523	162,29%	-12,24%	5.168	3,41%	5.422	4,32%	-4,68%	
10	Renault DUSTER	286	159	222	79,87%	28,83%	4.562	3,01%	1.622	1,29%	181,26%	
11	Citroen BERLINGO FURGON	456	450	506	1,33%	-9,88%	4.554	3,01%	3.723	2,97%	22,32%	
12	Mercedes Benz SPRINTER	475	355	421	33,80%	12,83%	3.810	2,52%	2.705	2,16%	40,85%	
13	Fiat FIORINO QUBO	256	366	280	-30,05%	-8,57%	2.781	1,84%	1.769	1,41%	57,21%	
14	Toyota RAV 4	307	243	303	26,34%	1,32%	2.610	1,72%	2.617	2,09%	-0,27%	
15	Chery TIGGO	281	213	312	31,92%	-9,94%	2.593	1,71%	2.026	1,62%	27,99%	
16	Toyota HILUX SW4	210	167	231	25,75%	-9,09%	2.228	1,47%	2.030	1,62%	9,75%	
17	Honda CRV	271	169	211	60,36%	28,44%	2.030	1,34%	2.620	2,09%	-22,52%	
18	Hyundai TUCSON	275	179	305	53,63%	-9,84%	1.961	1,29%	1.058	0,84%	85,35%	
19	Renault MASTER	6	412	25	-98,54%	-76,00%	1.714	1,13%	3.871	3,09%	-55,72%	
20	Renault NUEVO MASTER	425		314	N/D	35,35%	1.584	1,05%		0,00%	N/D	
21	Otros	2.976	1.917	2.498	55,24%	19,14%	23.757	15,68%	20.913	16,67%	13,60%	
Total		16.516	13.468	15.863			151.491	1	125.437			

Comercial Pesado												
Rank.	Modelo	sep/13 (a)	sep/12 (b)	ago/13 (c)	Var a-b	Var a-c	Ac. 13	Part %	Ac. 12	Part %	Var 13-12	
1	Iveco 170 E	305	183	248	66,67%	22,98%	2.175	10,68%	1.682	9,89%	29,31%	
2	Ford CARGO 1722	163	87	122	87,36%	33,61%	1.423	6,99%	1.049	6,17%	35,65%	
3	Mercedes Benz 710	81	56	101	44,64%	-19,80%	946	4,64%	360	2,12%	162,78%	
4	Iveco 450 E	74	106	137	-30,19%	-45,99%	930	4,57%	648	3,81%	43,52%	
5	Mercedes Benz BMO 384 VERSION 1418	83	54	84	53,70%	-1,19%	723	3,55%	804	4,73%	-10,07%	
6	Mercedes Benz 693 VERSION 1720/48	8	87	36	-90,80%	-77,78%	599	2,94%	746	4,38%	-19,71%	
7	Mercedes Benz OF 1418	56	41	69	36,59%	-18,84%	565	2,77%	331	1,95%	70,69%	
8	Mercedes Benz BMO 368 VERSION 1618L	47	44	25	6,82%	88,00%	537	2,64%	662	3,89%	-18,88%	
9	Mercedes Benz O-500	41	21	57	95,24%	-28,07%	526	2,58%	353	2,07%	49,01%	
10	Volkswagen 17220	45	72	59	-37,50%	-23,73%	523	2,57%	573	3,37%	-8,73%	
11	Ford CARGO 915 E	55	17	31	223,53%	77,42%	476	2,34%	227	1,33%	109,69%	
12	Mercedes Benz BMO 695	140		125	N/D	12,00%	454	2,23%		0,00%	N/D	
13	Iveco 180 E	50	33	41	51,52%	21,95%	388	1,90%	252	1,48%	53,97%	
14	Mercedes Benz ATEGO 1725	30	74	51	-59,46%	-41,18%	384	1,89%	587	3,45%	-34,58%	
15	Iveco 490 S	52	19	22	173,68%	136,36%	367	1,80%	215	1,26%	70,70%	
16	Scania P360	30		46	N/D	-34,78%	350	1,72%		0,00%	N/D	
17	Renault PREMIUM	43	51	41	-15,69%	4,88%	344	1,69%	335	1,97%	2,69%	
18	Volkswagen 13180	33	24	38	37,50%	-13,16%	342	1,68%	255	1,50%	34,12%	
19	Ford CARGO 1932	45	30	28	50,00%	60,71%	338	1,66%	240	1,41%	40,83%	
20	Scania G360	42		40	N/D	5,00%	336	1,65%		0,00%	N/D	
21	Otros	867	674	961	28,64%	-9,78%	7.645	37,53%	7.694	45,22%	-0,64%	
Total		2.290	1.673	2.362			20.371	1	17.013			

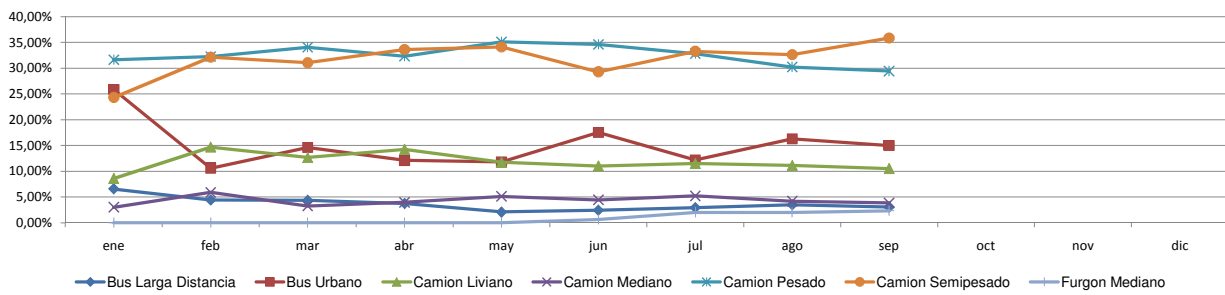


Patentamientos por Ranking de Livianos y Pesados - Mercado Total

Comercial Liviano



Comercial Pesado





Patentamientos por Provincias y Tipos -

Distrito	Automovil+Comercial Liviano								Comercial Pesado+Otros Pesados								Mercado Total			
	sep/13 (a)	sep/12 (b)	ago/13 (c)	Var a-b	Var a-c	Ac. 13	Ac. 12	Var 13-12	sep/13 (a)	sep/12 (b)	ago/13 (c)	Var a-b	Var a-c	Ac. 13	Ac. 12	Var 13-12	Ac. 13	Ac. 12	Var 13-12	Part %
GRAN BUENOS AIRES	15.163	11.572	14.968	31,03%	1,30%	136.378	117.254	16,31%	354	221	346	60,18%	2,31%	2.988	2.403	24,34%	139.366	119.657	16,47%	18,51%
CAPITAL FEDERAL	13.161	10.279	13.020	28,04%	1,08%	116.942	101.141	15,62%	794	546	782	45,42%	1,53%	6.852	5.582	22,75%	123.794	106.723	16,00%	16,45%
BUENOS AIRES	12.176	9.470	12.301	28,57%	-1,02%	112.000	101.269	10,60%	447	379	488	17,94%	-8,40%	4.132	3.705	11,52%	116.135	104.974	10,63%	15,43%
CORDOBA	7.367	5.977	7.487	23,26%	-1,60%	68.556	62.204	10,21%	284	204	231	39,22%	22,94%	2.432	1.822	33,48%	70.988	64.026	10,87%	9,43%
SANTA FE	6.594	5.129	6.239	28,56%	5,69%	59.479	53.629	10,91%	296	250	381	18,40%	-22,31%	2.714	2.352	15,39%	62.193	55.981	11,10%	8,26%
MENDOZA	3.001	2.450	3.343	22,49%	-10,23%	29.002	25.512	13,68%	181	107	166	69,16%	9,04%	1.259	1.053	19,56%	30.261	26.565	13,91%	4,02%
ENTRE RIOS	2.269	1.714	1.960	32,38%	15,77%	19.314	18.218	6,02%	123	102	116	20,59%	6,03%	1.047	962	8,84%	20.361	19.180	6,16%	2,70%
TUCUMAN	1.695	1.405	1.783	20,64%	-4,94%	16.229	16.266	-0,23%	60	42	71	42,86%	-15,49%	802	1.007	-20,36%	17.031	17.273	-1,40%	2,26%
CORRIENTES	1.483	1.233	1.548	20,28%	-4,20%	14.811	15.366	-3,61%	121	129	150	-6,20%	-19,33%	1.197	1.298	-7,78%	16.008	16.664	-3,94%	2,13%
SALTA	1.485	1.136	1.516	30,72%	-2,04%	14.834	13.803	7,47%	65	57	53	14,04%	22,64%	748	752	-0,53%	15.582	14.555	7,06%	2,07%
NEUQUEN	1.607	1.159	1.456	38,65%	10,37%	14.264	12.809	11,36%	121	85	94	42,35%	28,72%	903	685	31,82%	15.167	13.494	12,40%	2,01%
CHUBUT	1.439	1.239	1.500	16,14%	-4,07%	13.620	13.303	2,38%	50	47	90	6,38%	-44,44%	649	554	17,15%	14.269	13.857	2,97%	1,90%
CHACO	1.393	1.052	1.338	32,41%	4,11%	12.270	10.845	13,14%	60	60	59	0,00%	1,69%	568	487	16,63%	12.838	11.332	13,29%	1,71%
RIO NEGRO	1.362	953	1.314	42,92%	3,65%	11.874	9.998	18,76%	43	19	40	126,32%	7,50%	255	167	52,69%	12.129	10.165	19,32%	1,61%
MISIONES	1.244	913	1.278	36,25%	-2,66%	11.131	9.278	19,97%	50	45	40	11,11%	25,00%	368	312	17,95%	11.499	9.590	19,91%	1,53%
JUJUY	850	718	888	18,38%	-4,28%	9.243	8.632	7,08%	42	55	74	-23,64%	-43,24%	639	624	2,40%	9.882	9.256	6,76%	1,31%
SANTA CRUZ	994	794	969	25,19%	2,58%	8.980	8.798	2,07%	41	25	43	64,00%	-4,65%	426	327	30,28%	9.406	9.125	3,08%	1,25%
SAN JUAN	820	762	943	7,61%	-13,04%	8.359	7.778	7,47%	44	62	35	-29,03%	25,71%	380	422	-9,95%	8.739	8.200	6,57%	1,16%
TIERRA DEL FUEGO	977	809	909	20,77%	7,48%	7.536	7.317	2,99%	37	46	36	-19,57%	2,78%	325	323	0,62%	7.861	7.640	2,89%	1,04%
LA PAMPA	760	721	761	5,41%	-0,13%	7.528	7.166	5,05%	39	37	28	5,41%	39,29%	316	221	42,99%	7.844	7.387	6,19%	1,04%
SANTIAGO DEL ESTERO	649	587	740	10,56%	-12,30%	7.353	7.256	1,34%	38	27	50	40,74%	-24,00%	382	357	7,00%	7.735	7.613	1,60%	1,03%
SAN LUIS	696	486	790	43,21%	-11,90%	6.716	5.994	12,05%	13	12	26	8,33%	-50,00%	130	115	13,04%	6.846	6.109	12,06%	0,91%
FORMOSA	792	510	730	55,29%	8,49%	6.510	6.371	2,18%	25	14	18	78,57%	38,89%	160	172	-6,98%	6.670	6.543	1,94%	0,89%
CATAMARCA	573	511	611	12,13%	-6,22%	5.811	5.240	10,90%	11	8	21	37,50%	-47,62%	129	92	40,22%	5.940	5.332	11,40%	0,79%
LA RIOJA	440	338	458	30,18%	-3,93%	4.092	3.949	3,62%	9	13	14	-30,77%	-35,71%	91	143	-36,36%	4.183	4.092	2,22%	0,56%



Patentamientos por Provincias y Tipos -

